

## **VII. Crime Scene Documentation and Analysis**

The Providence Police Department Bureau of Criminal Identification (BCI) responded to the scene of the motor vehicle crash to conduct the crime scene documentation and analysis. All physical evidence and the suspect vehicle were seized by the Providence Police. Additionally, Providence Police photographed and seized two (2) air rifles located inside the suspect vehicle. The air rifles were identified as a Daisy Powerline 880 and a Daisy Red Ryder 4.5 mm.

It should be noted that a review of the operation manuals for both the Daisy Powerline 880 air rifle and the Daisy Red Ryder 4.5 mm air rifle, revealed the following:

- Daisy Powerline 880 air rifle is identified as a high power air rifle that can be dangerous from a distance of up to two hundred fifty-nine (259) yards away and misuse, or careless use can result in serious injury or death.
- Daisy Red Ryder 4.5 mm air rifle is identified as a spring air rifle that can be dangerous from a distance of up to two hundred twelve (212) yards away and misuse or careless use can result in serious injury, particularly to the eye.

Detectives from the Providence Police BCI Unit additionally seized one (1) black knit ski mask, one (1) teal colored "durag" head wrap, one (1) white/pink iPhone, one (1) LG cellular telephone in a blue case from the area of the motor vehicle crash located at the corner of Salmon Street and King Street in the City of Providence.

DSC\_374752.jpg

Overview image of Salmon Street and King Street, Providence, Rhode Island



DSC\_374753.jpg

Overview image of Salmon Street and King Street, Providence, Rhode Island



DSC\_374754.jpg

Overview image of Salmon Street and King Street, Providence, Rhode Island



DSC\_374755.jpg

Overview image of Salmon Street and King Street, Providence, Rhode Island



DSC\_374756.jpg

The black convertible BMW crashed into a fire hydrant located at the corner of Salmon Street and King Street in the City of Providence



DSC\_374757.jpg

The black convertible BMW crashed into a fire hydrant located at the corner of Salmon Street and King Street in the City of Providence



DSC\_374758.jpg

The black convertible BMW crashed into a fire hydrant located at the corner of Salmon Street and King Street in the City of Providence





DSC\_374759.jpg

The black convertible BMW crashed into a fire hydrant located at the corner of Salmon Street and King Street in the City of Providence



DSC\_374760.jpg

The black convertible BMW crashed into a fire hydrant located at the corner of Salmon Street and King Street in the City of Providence



DSC\_374761.jpg

The black convertible BMW crashed into a fire hydrant located at the corner of Salmon Street and King Street in the City of Providence



DSC\_374762.jpg

The black convertible BMW crashed into a fire hydrant located at the corner of Salmon Street and King Street in the City of Providence



DSC\_374763.jpg

The black convertible BMW crashed into a fire hydrant located at the corner of Salmon Street and King Street in the City of Providence



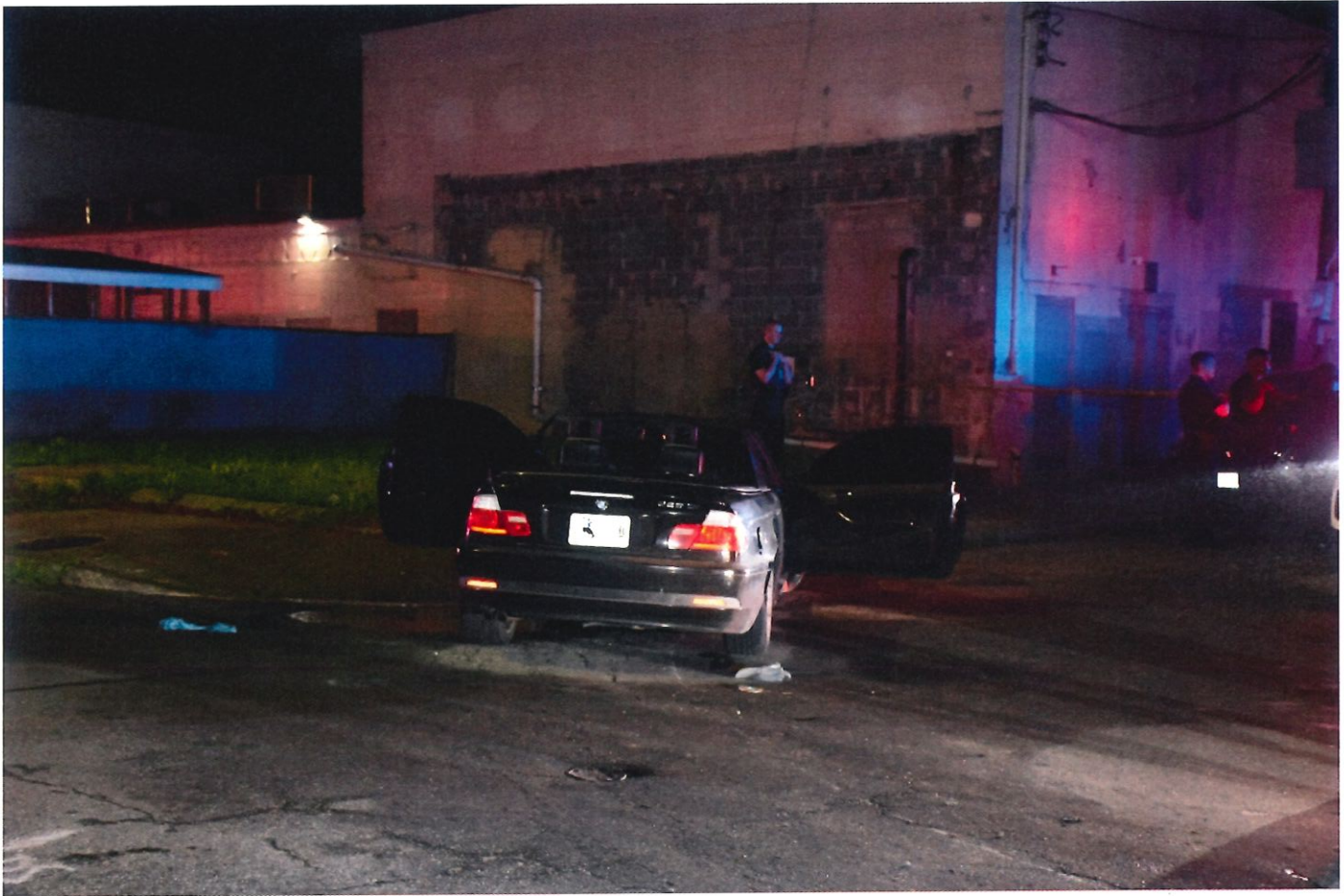
DSC\_374764.jpg

The black convertible BMW crashed into a fire hydrant located at the corner of Salmon Street and King Street in the City of Providence



DSC\_374765.jpg

The black convertible BMW crashed into a fire hydrant located at the corner of Salmon Street and King Street in the City of Providence



DSC\_374766.jpg

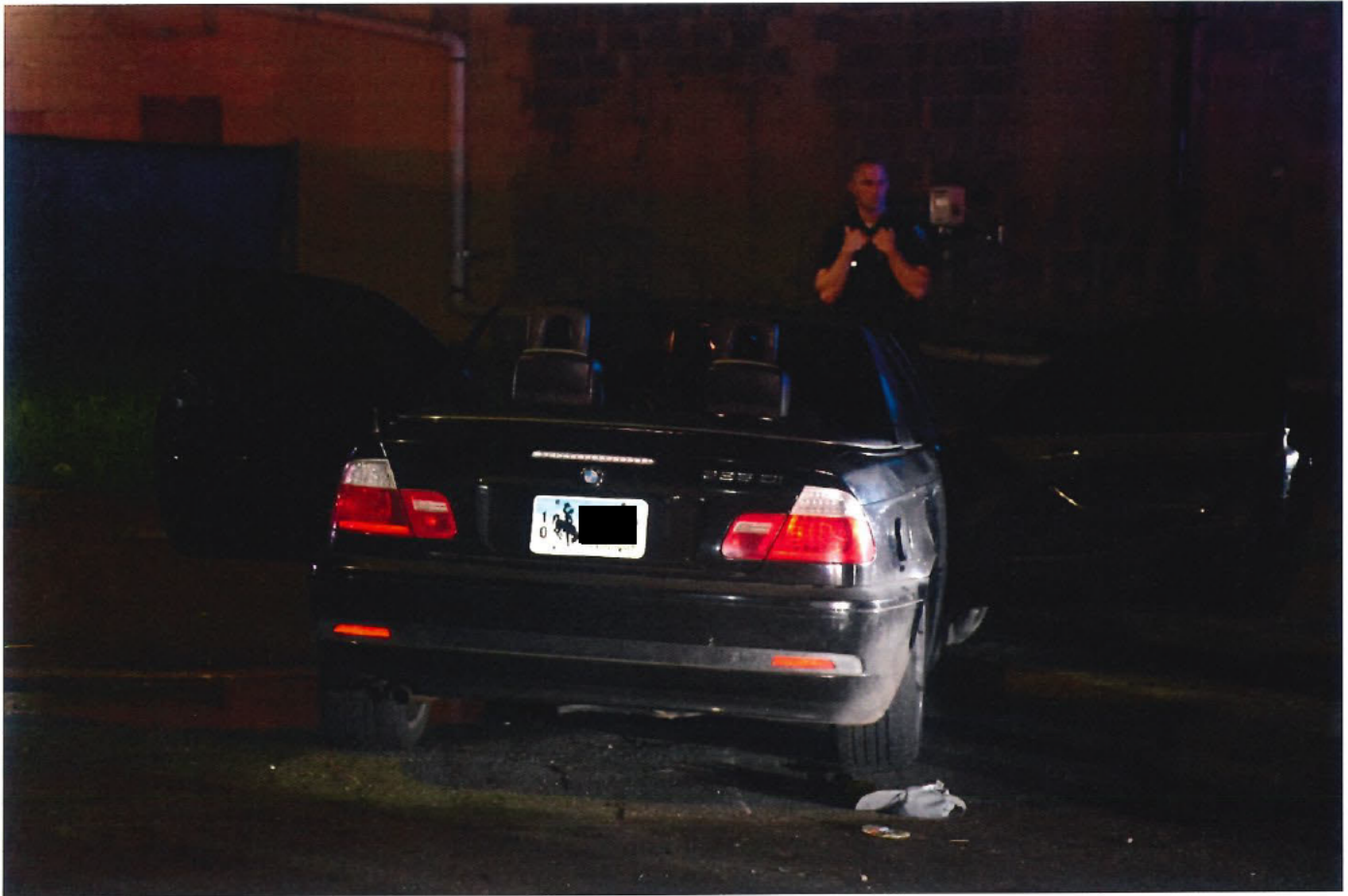
The black convertible BMW crashed into a fire hydrant located at the corner of Salmon Street and King Street in the City of Providence





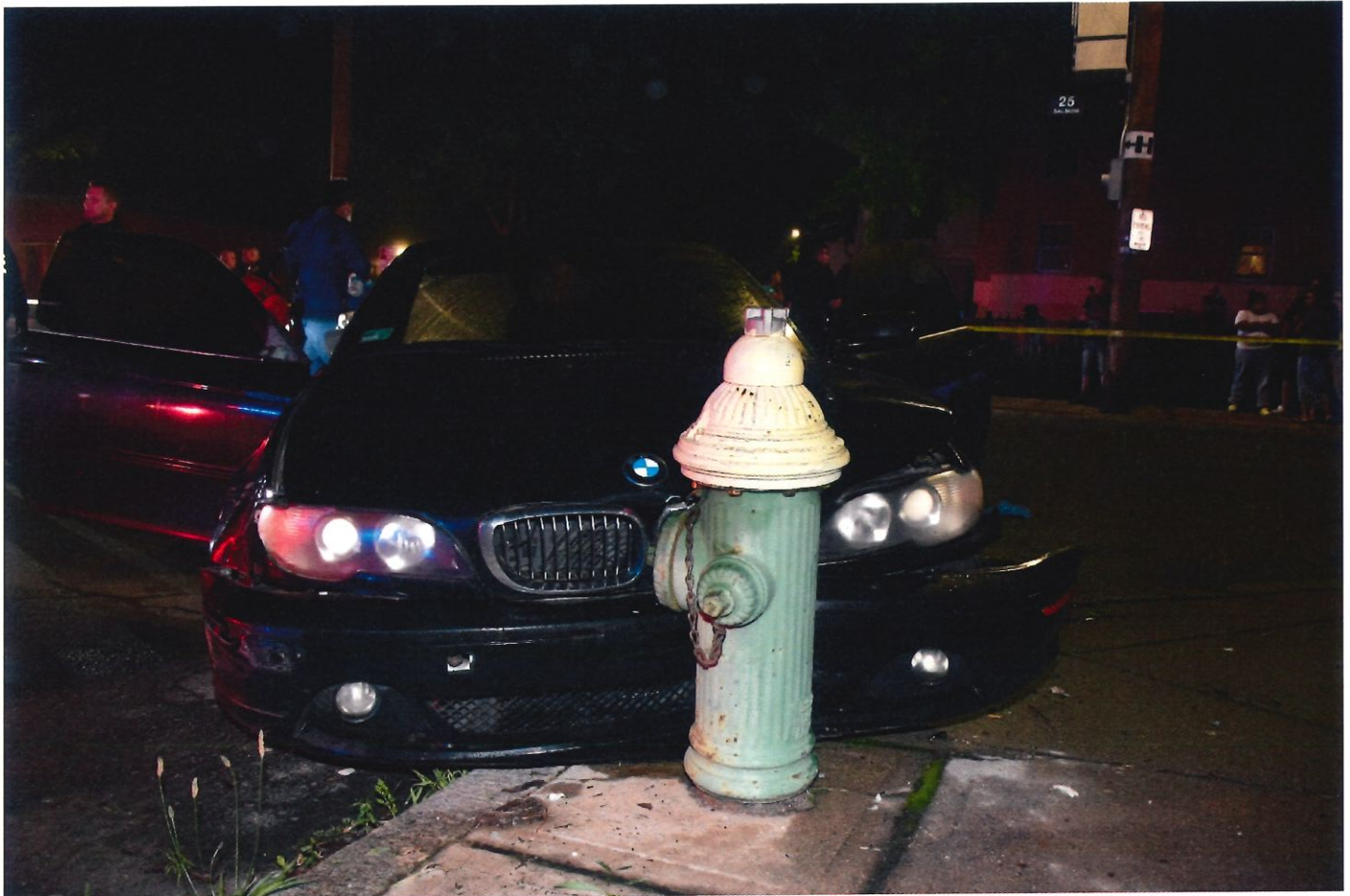
DSC\_374767.jpg

The black convertible BMW bearing Wyoming registration [REDACTED]



DSC\_374768.jpg

The black convertible BMW crashed into a fire hydrant located at the corner of Salmon Street and King Street in the City of Providence



DSC\_374769.jpg

The black convertible BMW crashed into a fire hydrant located at the corner of Salmon Street and King Street in the City of Providence



DSC\_374770.jpg

The black convertible BMW crashed into a fire hydrant located at the corner of Salmon Street and King Street in the City of Providence



DSC\_374771.jpg

The black convertible BMW crashed into a fire hydrant located at the corner of Salmon Street and King Street in the City of Providence



DSC\_374772.jpg

The black convertible BMW crashed into a fire hydrant located at the corner of Salmon Street and King Street in the City of Providence



DSC\_374773.jpg

The black convertible BMW crashed into a fire hydrant located at the corner of Salmon Street and King Street in the City of Providence



DSC\_374774.jpg

The black convertible BMW crashed into a fire hydrant located at the corner of Salmon Street and King Street in the City of Providence





DSC\_374775.jpg

The black convertible BMW crashed into a fire hydrant located at the corner of Salmon Street and King Street in the City of Providence



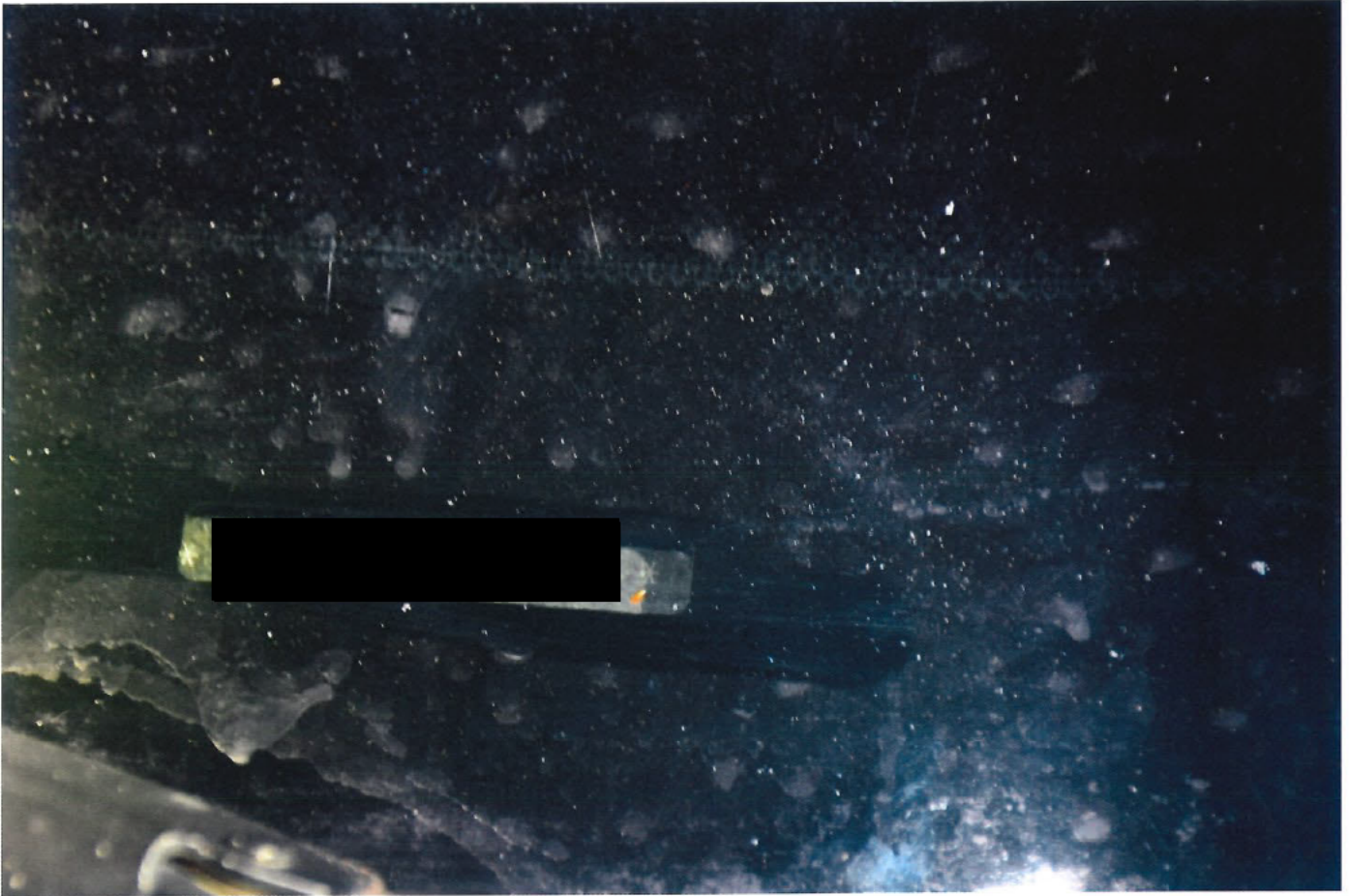
DSC\_374776.jpg

The black convertible BMW crashed into a fire hydrant located at the corner of Salmon Street and King Street in the City of Providence



DSC\_374777.jpg

Vehicle Identification number (VIN #) of the black convertible BMW



DSC\_374778.jpg

Front operator side compartment of the black convertible BMW



DSC\_374779.jpg

Front operator side compartment of the black convertible BMW



DSC\_374780.jpg

Front passenger side compartment of the black convertible BMW



DSC\_374781.jpg

Front passenger side compartment of the black convertible BMW



DSC\_374782.jpg

Air rifle located across the front passenger seat and floor of the black convertible BMW





DSC\_374783.jpg

Rear compartment of the black convertible BMW



DSC\_374784.jpg

Air rifle located across the rear seat and the middle console of the black convertible BMW



DSC\_374785.jpg

Air rifle located across the rear seat and the middle console of the black convertible BMW



DSC\_374786.jpg

Two (2) air rifles located inside the black convertible BMW



DSC\_374786.jpg

Two (2) air rifles located inside the black convertible BMW



DSC\_374787.jpg

Two (2) air rifles located inside the black convertible BMW



DSC\_374788.jpg

Overview of the front passenger side compartment of the black convertible BMW



DSC\_374789.jpg

A blue "durag" and a black knit ski mask located in the roadway on Salmon Street, near the operator side of the black convertible BMW





DSC\_374790.jpg

A blue "durag" and a black knit ski mask located in the roadway on Salmon Street



DSC\_374791.jpg

A blue "durag" and a black knit ski mask located in the roadway on Salmon Street



DSC\_374792.jpg

A blue "durag" and a black knit ski mask located in the roadway on Salmon Street



DSC\_374793.jpg

Black knit ski mask located in the roadway on Salmon Street



DSC\_374794.jpg

Blue "durag" located in the roadway on Salmon Street



DSC\_374795.jpg

Damage to the front operator side of Providence Police Cruiser #329



DSC\_374796.jpg

(Blurry Image) Damage to the front operator side of Providence Police Cruiser #329



DSC\_374797.jpg

Damage to the front operator side of Providence Police Cruiser #329





DSC\_374798.jpg

Damage to the front operator side of Providence Police Cruiser #329



DSC\_374799.jpg

Damage to the front operator side of Providence Police Cruiser #329



DSC\_374800.jpg

Damage to the front operator side of Providence Police Cruiser #329



DSC\_374801.jpg

Damage to the front operator side of Providence Police Cruiser #329



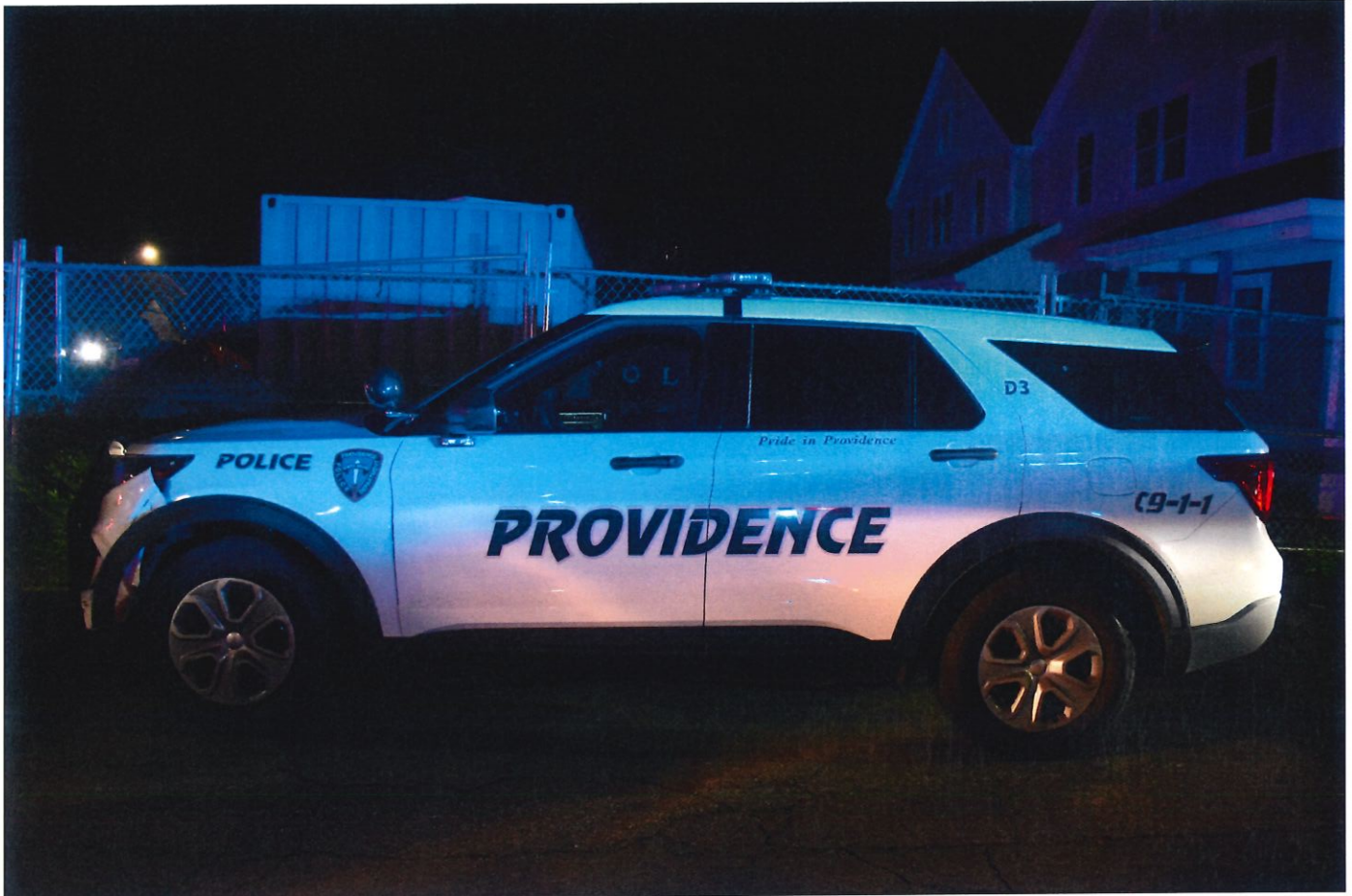
DSC\_374802.jpg

Damage to the front operator side of Providence Police Cruiser #329



DSC\_374803.jpg

Damage to the front operator side of Providence Police Cruiser #329



DSC\_374804.jpg

Damage to the front operator side of Providence Police Cruiser #329



DSC\_374805.jpg

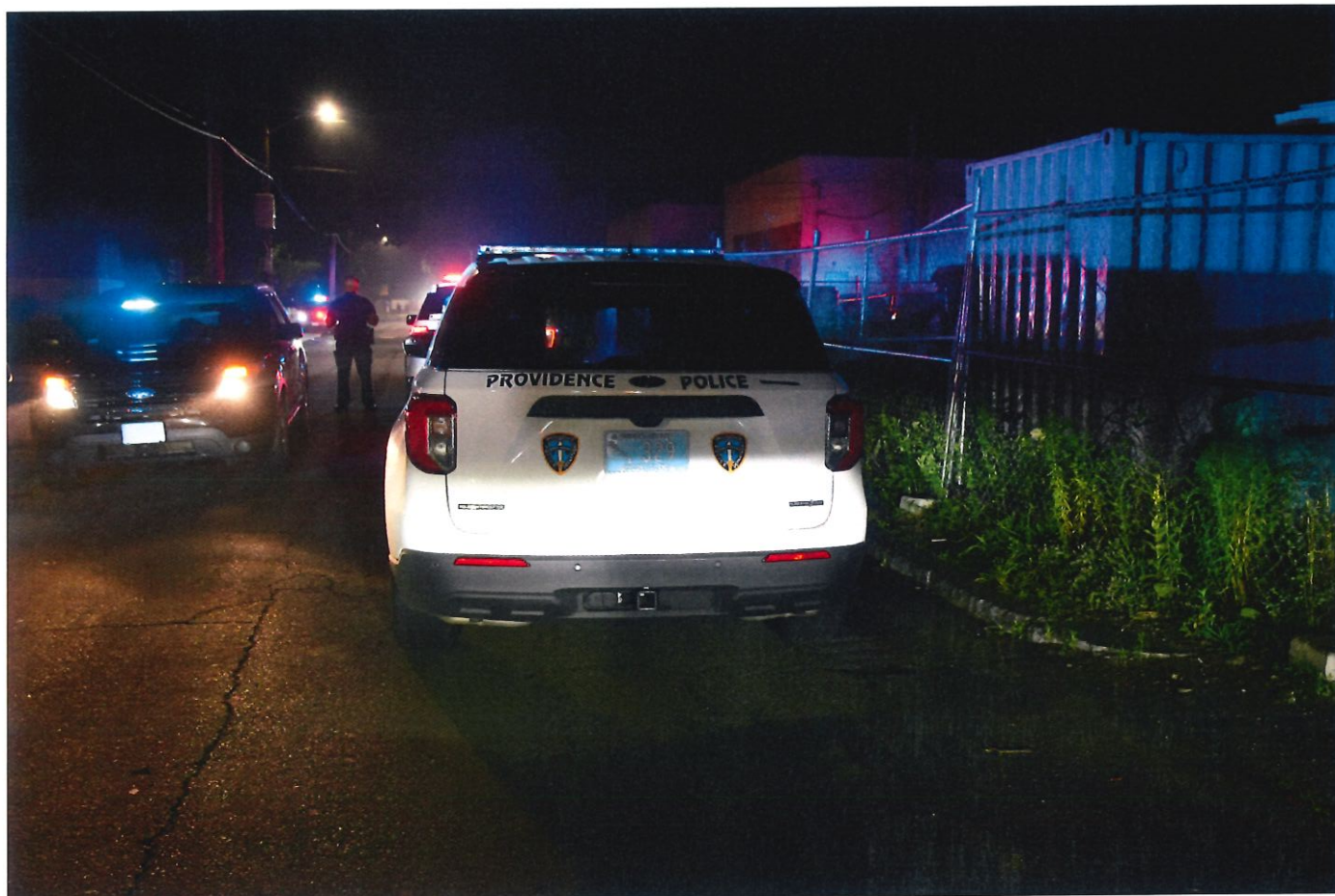
Vehicle Identification Number (VIN #) of Providence Police Cruiser #329





DSC\_374806.jpg

Rear side of Providence Police Cruiser #329



DSC\_374807.jpg

Rear side of Providence Police Cruiser #329



DSC\_374808.jpg

Rear passenger side of Providence Police Cruiser #329



DSC\_374809.jpg

Rear passenger side of Providence Police Cruiser #329



DSC\_374810.jpg

Front passenger side of Providence Police Cruiser #329



DSC\_374811.jpg

Front side of Providence Police Cruiser #763



DSC\_374812.jpg

Front side of Providence Police Cruiser #763



DSC\_374813.jpg

Front side of Providence Police Cruiser #763





DSC\_374814.jpg

Front operator side of Providence Police Cruiser #763



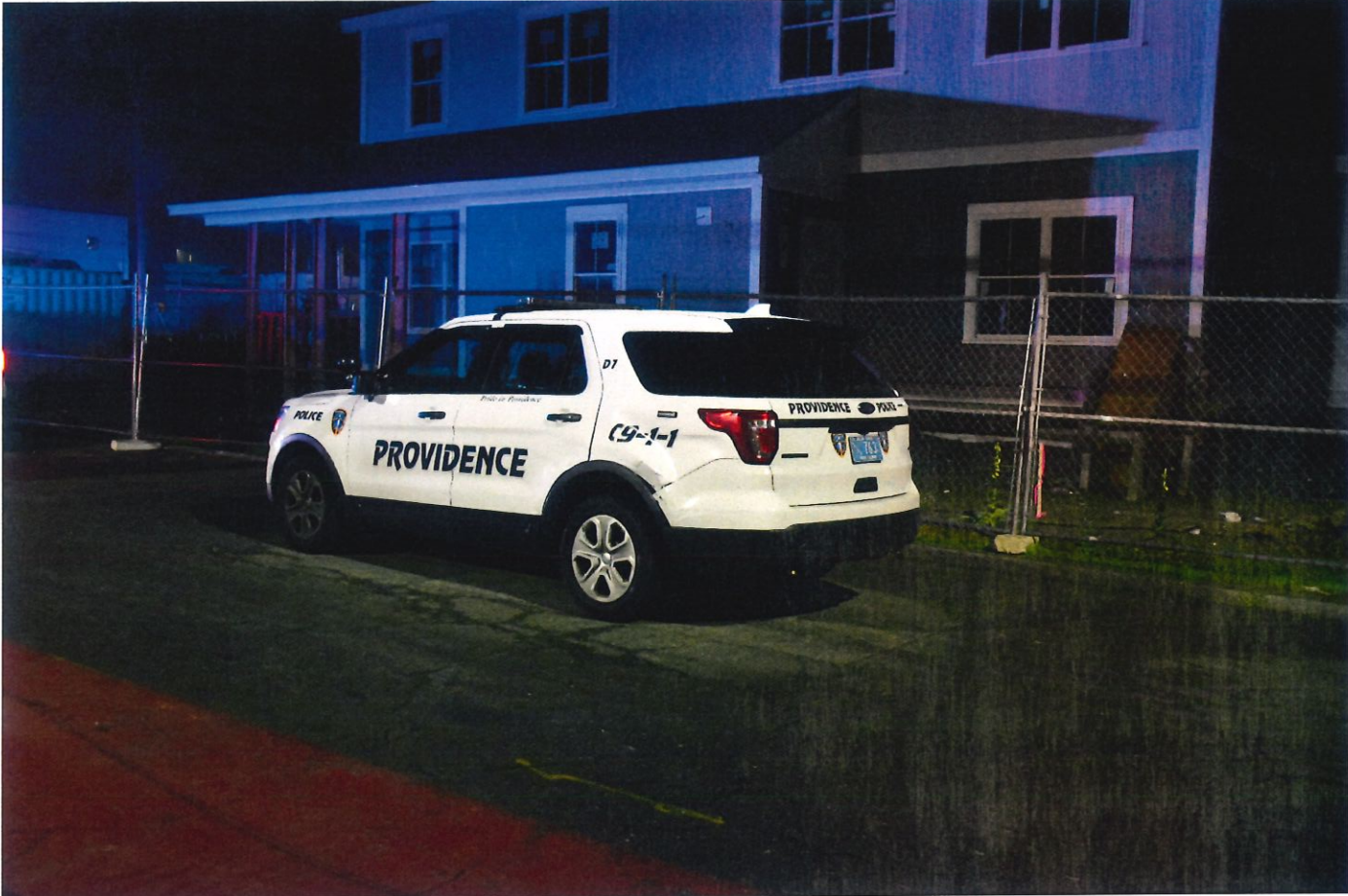
DSC\_374815.jpg

Operator side of Providence Police Cruiser #763



DSC\_374816.jpg

Operator rear side of Providence Police Cruiser #763



DSC\_374817.jpg

Rear side of Providence Police Cruiser #763



DSC\_374818.jpg

Rear side of Providence Police Cruiser #763



DSC\_374819.jpg

Rear passenger side of Providence Police Cruiser #763



DSC\_374820.jpg

Front passenger side of Providence Police Cruiser #763



DSC\_374821.jpg

(Blurry Image) Vehicle Identification Number (VIN #) of Providence Police Cruiser #763





DSC\_374822.jpg

Vehicle Identification Number (VIN #) of Providence Police Cruiser #763



DSC\_374823.jpg

Rear operator side of Providence Police Cruiser #763



DSC\_374824.jpg

Rear operator side of Providence Police Cruiser #763



DSC\_374825.jpg

Rear operator side of Providence Police Cruiser #763



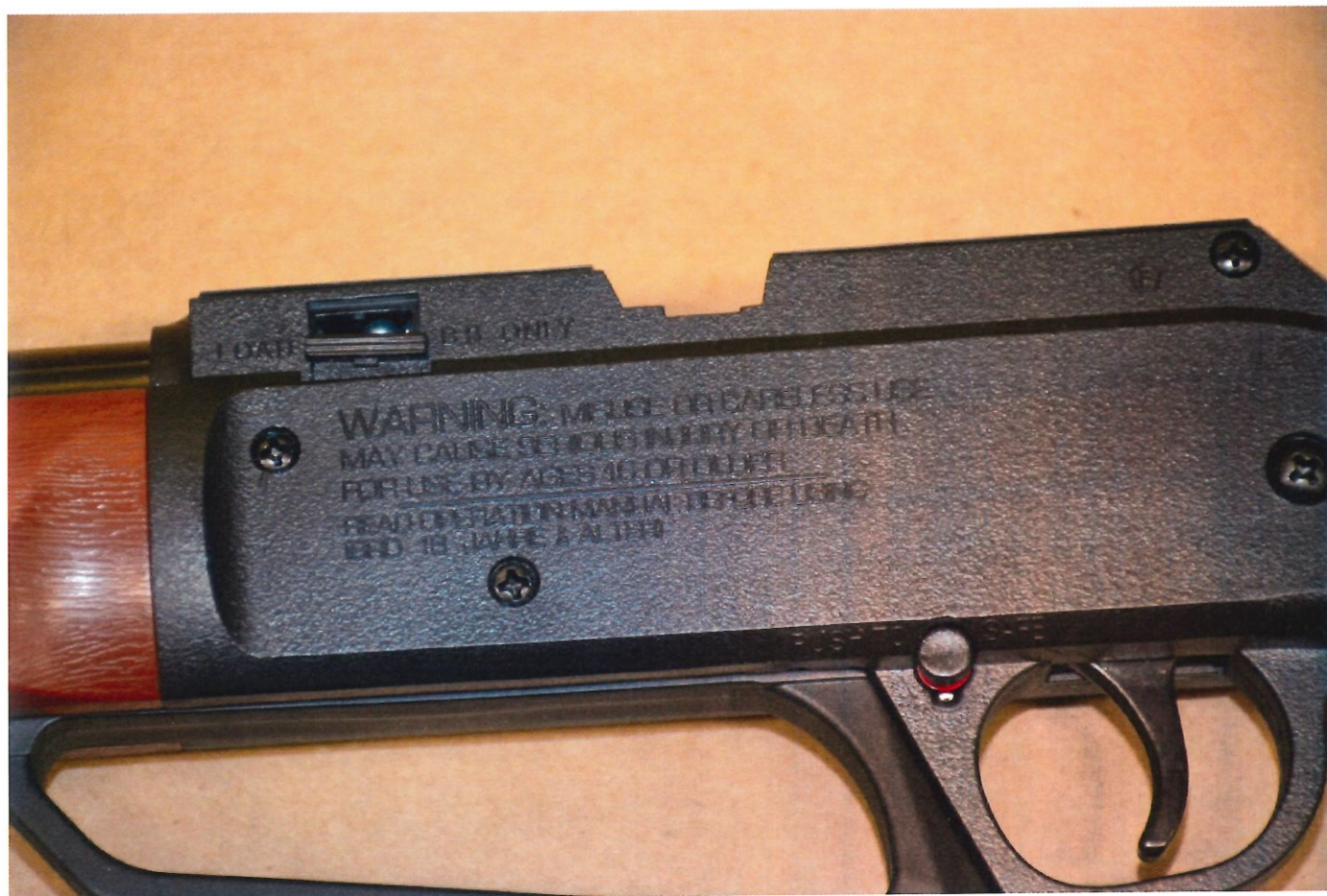
DSC\_374844.jpg

Daisy PowerLine 880 Air Rifle



DSC\_374845.jpg

Warning label etched on Daisy PowerLine 880 Air Rifle (WARNING: MISUSE OR CARELESS USE MAY CAUSE SERIOUS INJURY OR DEATH. FOR USE BY AGES 16 OR OLDER.)



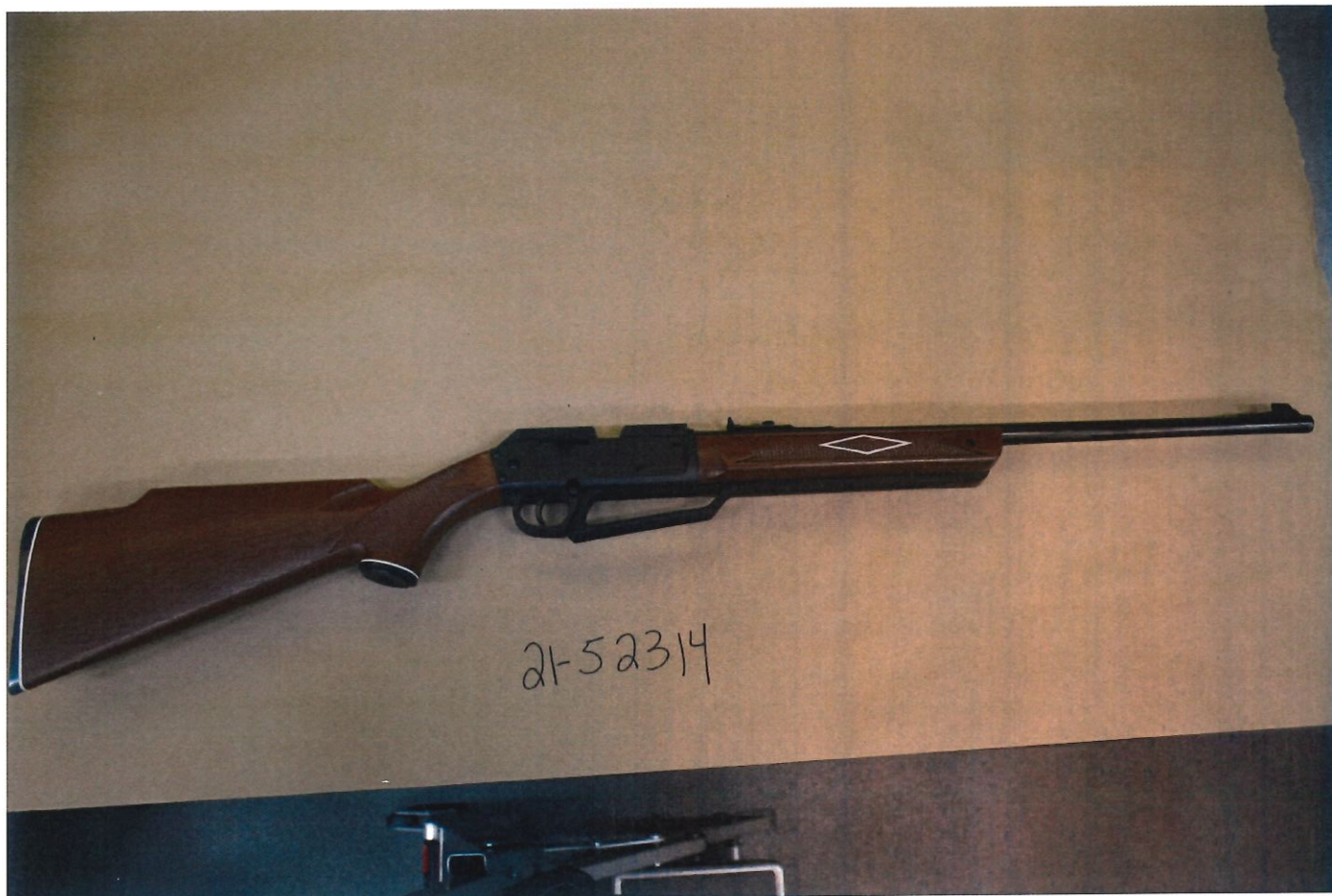
DSC\_374846.jpg

BB was loaded in Daisy PowerLine 880 Air Rifle



DSC\_374847.jpg

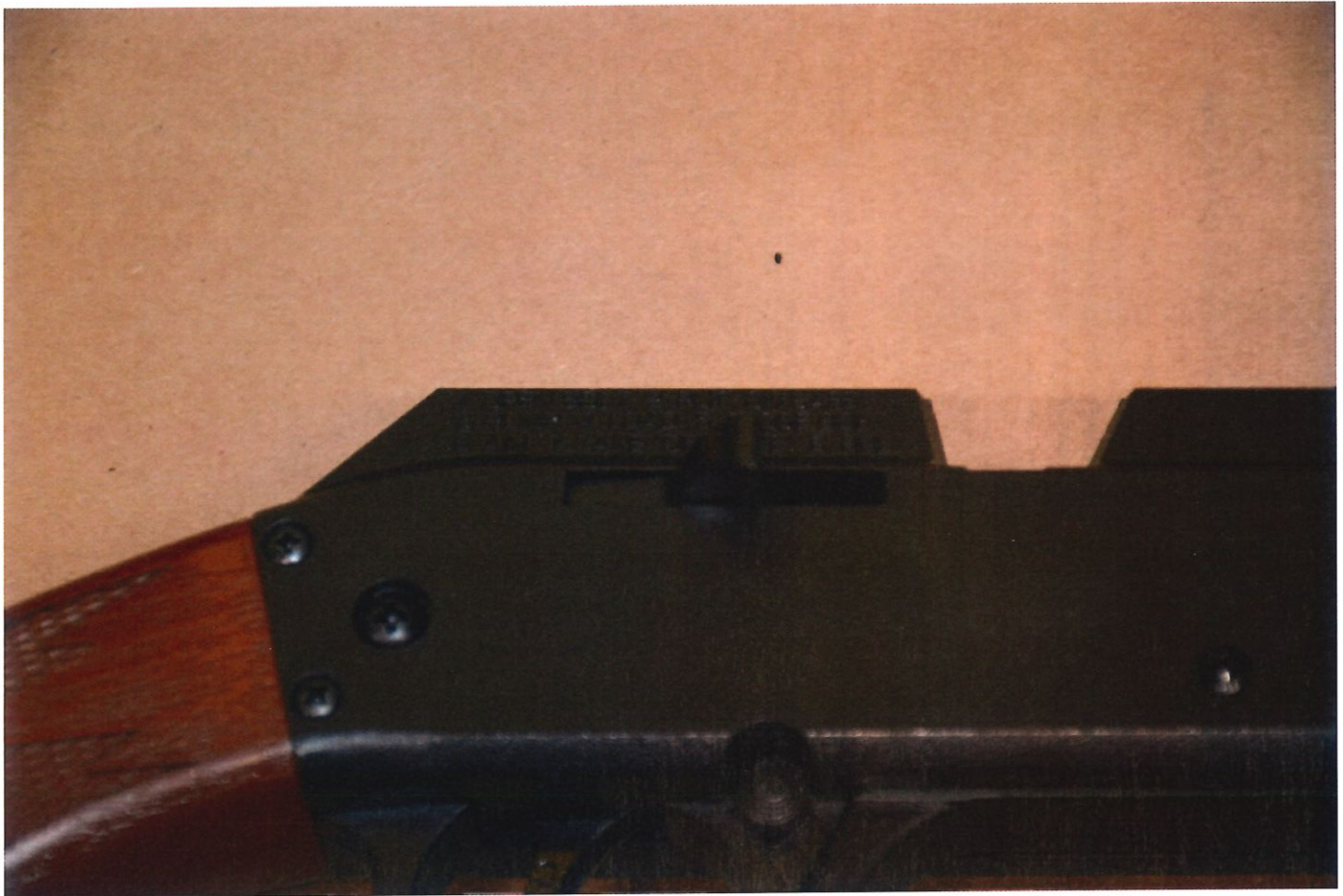
Daisy PowerLine 880 Air Rifle





DSC\_374848.jpg

Bolt handle of Daisy PowerLine 880 Air Rifle



DSC\_374849.jpg

Bolt handle of Daisy PowerLine 880 Air Rifle



DSC\_374850.jpg

Daisy Red Ryder Air Rifle



DSC\_374851.jpg

Stock of Daisy Red Ryder Air Rifle



DSC\_374852.jpg

Stock of Daisy Red Ryder Air Rifle



DSC\_374853.jpg

Barrel of Daisy Red Ryder Air Rifle



DSC\_374854.jpg

Daisy Red Ryder Air Rifle



DSC\_374855.jpg

Stock of Daisy Red Ryder Air Rifle





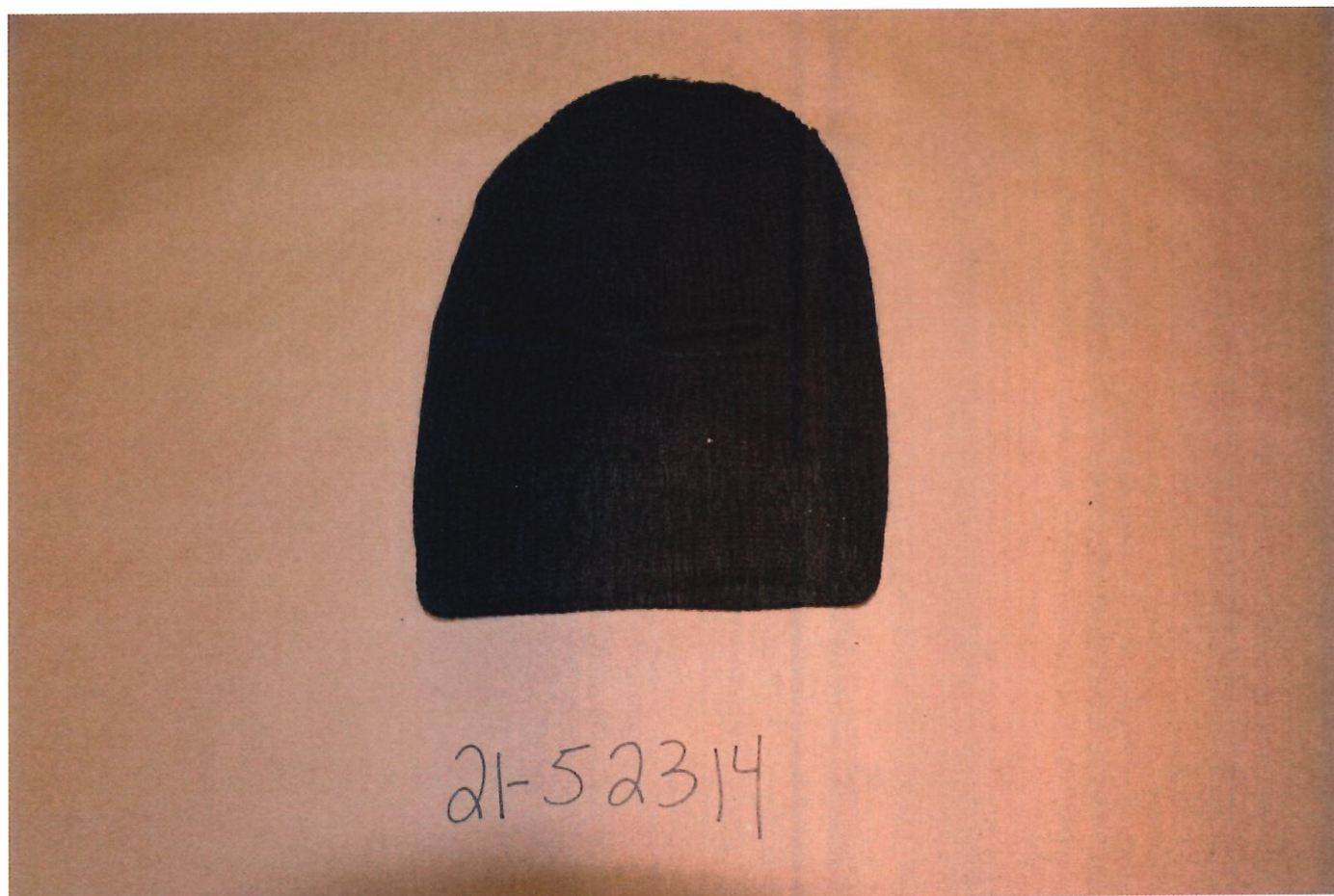
DSC\_374856.jpg

Pump handle of Daisy Red Ryder Air Rifle



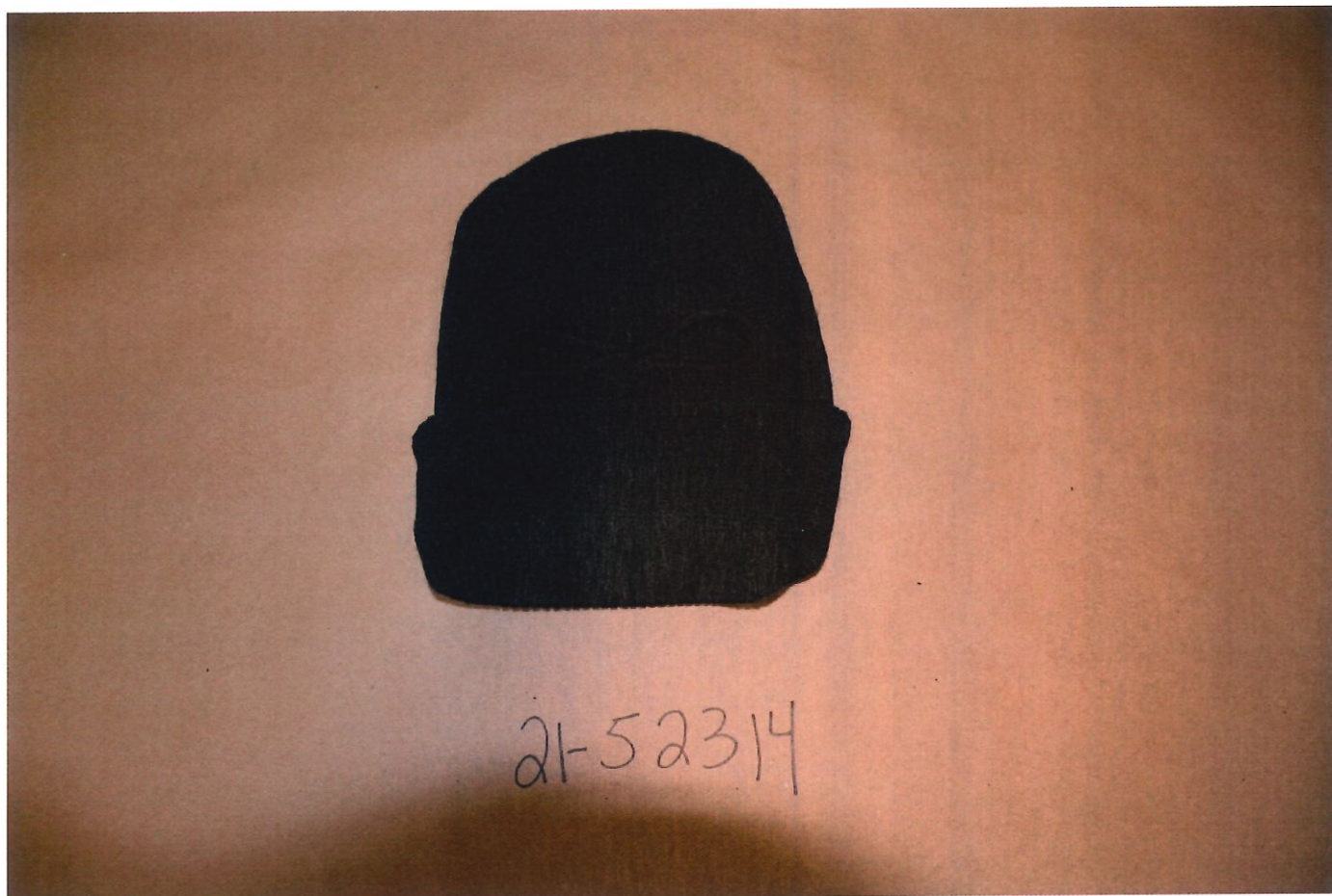
DSC\_374857.jpg

Black knit ski mask



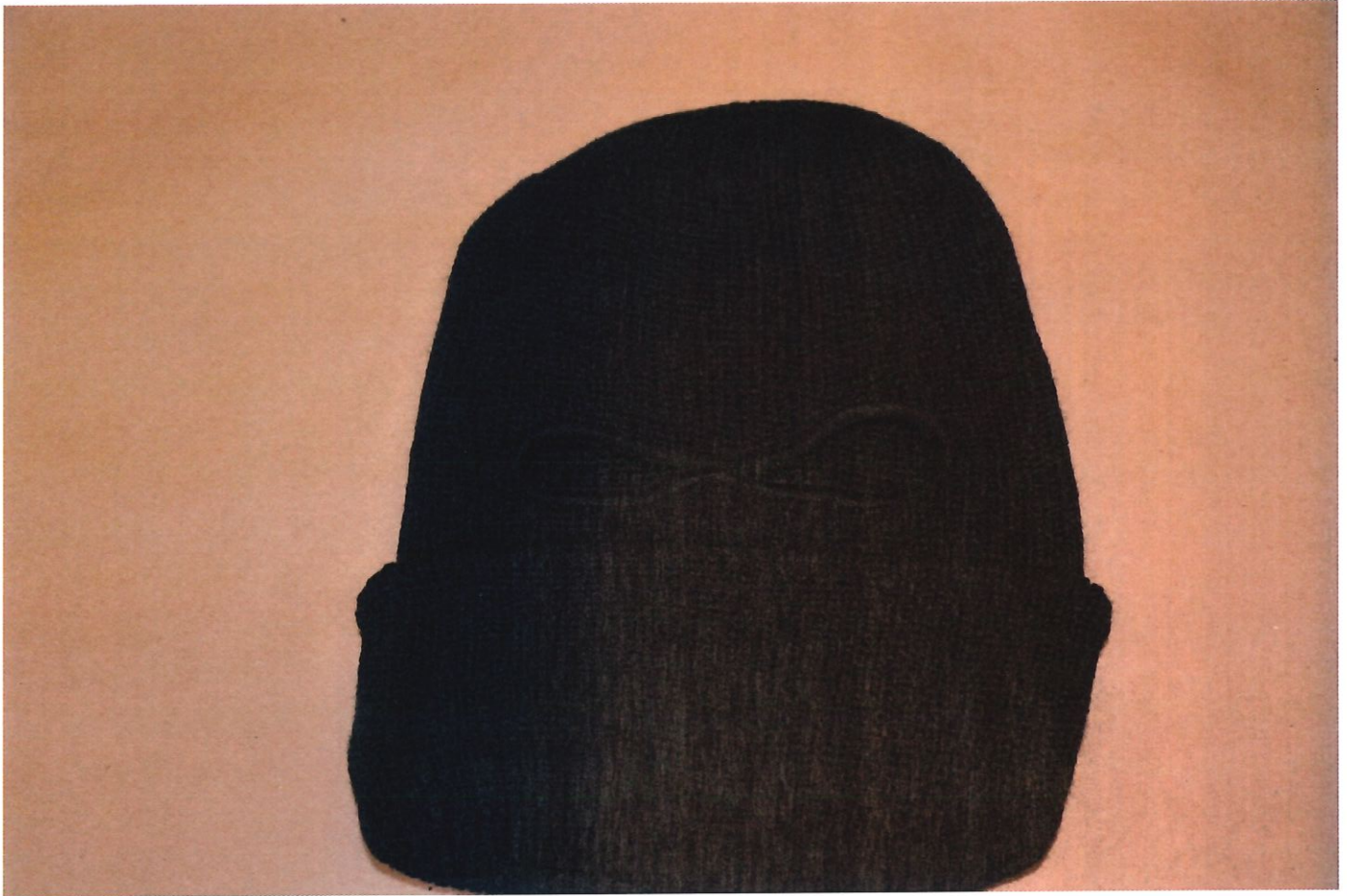
DSC\_374858.jpg

Black knit ski mask



DSC\_374859.jpg

Black knit ski mask



DSC\_374860.jpg

Blue "durag"



DSC\_374861.jpg

Blue "durag"



DSC\_374862.jpg

Daisy PowerLine 880 Air Rifle

